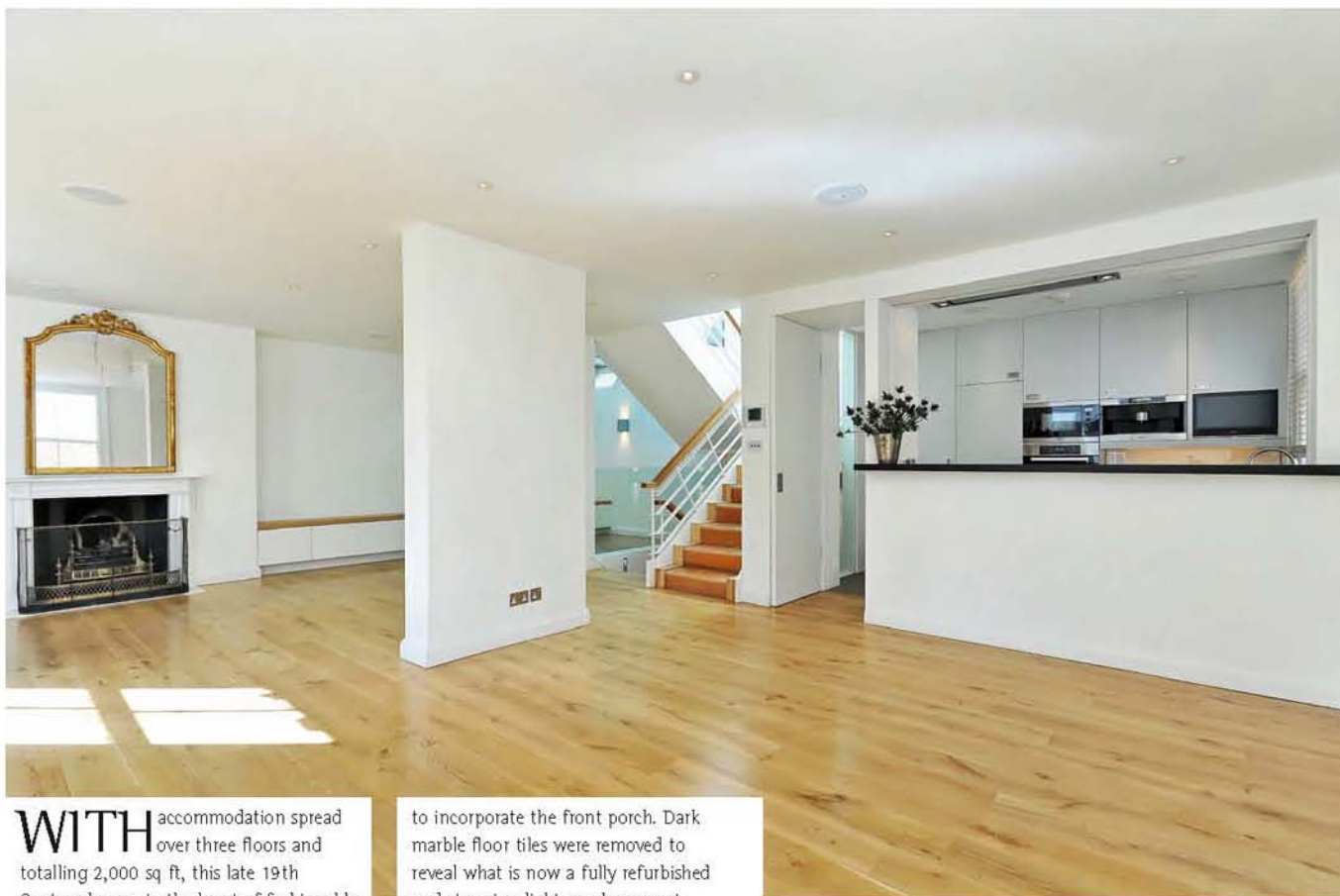


# Where There Was Darkness...

From gloomy and oppressive to bright and inspiring, a London mews house has been given a complete overhaul with stunning results



**WITH** accommodation spread over three floors and totalling 2,000 sq ft, this late 19th Century house, in the heart of fashionable Kensington, provided an unusually large canvas as far as mews properties go. However, with the bedrooms located on the ground floor the immediate perception upon entering the property was one of gloom and restriction.

"The main aim of the refurbishment was to open up the house into a more beautiful and useable space with light reflected far deeper within it," explains Andrew Wood, Managing Director of Curtis Wood Architects who designed the project.

The ground floor bedrooms were redecorated and the lobby extended

to incorporate the front porch. Dark marble floor tiles were removed to reveal what is now a fully refurbished and stunning light maple parquet flooring. The separate shower room and WC have been combined to provide a large family bathroom and improved lighting throughout gives a contemporary luminescence.

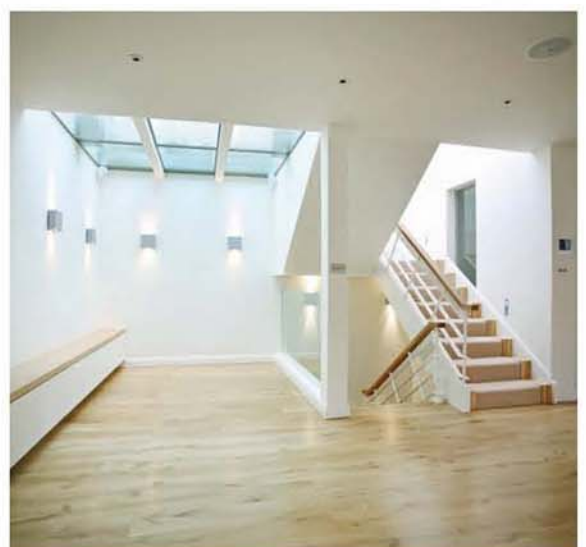
The open plan living space and kitchen on the first floor, whilst lighter than the ground floor, felt small and restricted. The courtyard, accessible from the living room, was too low in the building to receive much natural daylight, and as a result had become an unattractive and unused area.

The existing heavily-framed curtain walling over the first and second floors →





“THE MAIN AIM WAS TO OPEN UP THE HOUSE INTO A MORE BEAUTIFUL AND USEABLE SPACE WITH LIGHT REFLECTED FAR DEEPER WITHIN IT”



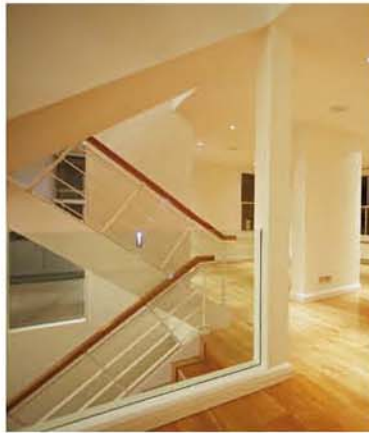


was stripped back to allow for a new frameless glass terrace and extension at second floor level which added a valuable internal extension to the living room below.

The small kitchen was opened up to the dining area with a granite breakfast bar. A small internal window to the stairs was enlarged to full height, enabling long views through the house, visually connecting the floors together.

The two second-floor bedrooms were completed with new wardrobes and lighting, and the refurbished maple flooring. The master bathroom was extended into a previously unused space against the party wall, and instead of the original side windows facing a wall, two large linear roof lights were installed. With no overlooking issues, these make for a dramatic and glamorous addition to the space, and help create critical additional headroom that, due to conservation area restrictions, would not have otherwise been possible. **designer**

**Curtis Wood Architects**  
[www.curtiswoodarchitects.com](http://www.curtiswoodarchitects.com)



“TWO LARGE LINEAR ROOF LIGHTS MAKE FOR A DRAMATIC AND GLAMOROUS ADDITION TO THE SPACE, AND HELP CREATE CRITICAL ADDITIONAL HEADROOM”

